

Publiacqua

PROGETTO ESECUTIVO

Comune di SCARPERIA

Titolo progetto: Nuova centrale di potabilizzazione "Autodromo", serbatoio di accumulo, centrale di pompaggio, e collegamenti acquedotto e fognatura.

Titolo disegno: Costruttivo FILTRI A SABBIA - diam. 3200 mm

Project information block including company details (INGEGNERIE TOSCANE), scale (1:20), date (Luglio 2011), and revision table.

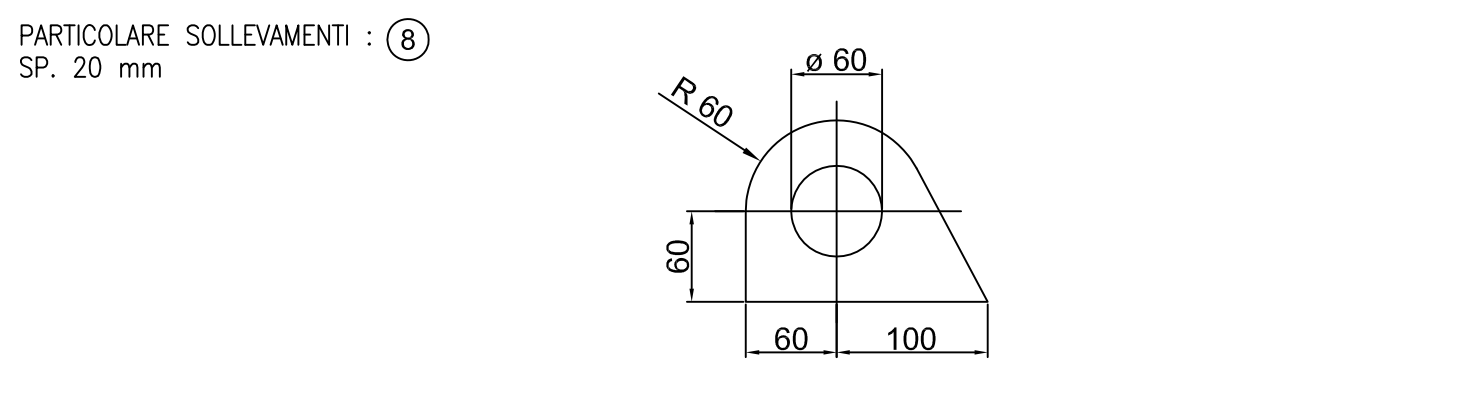
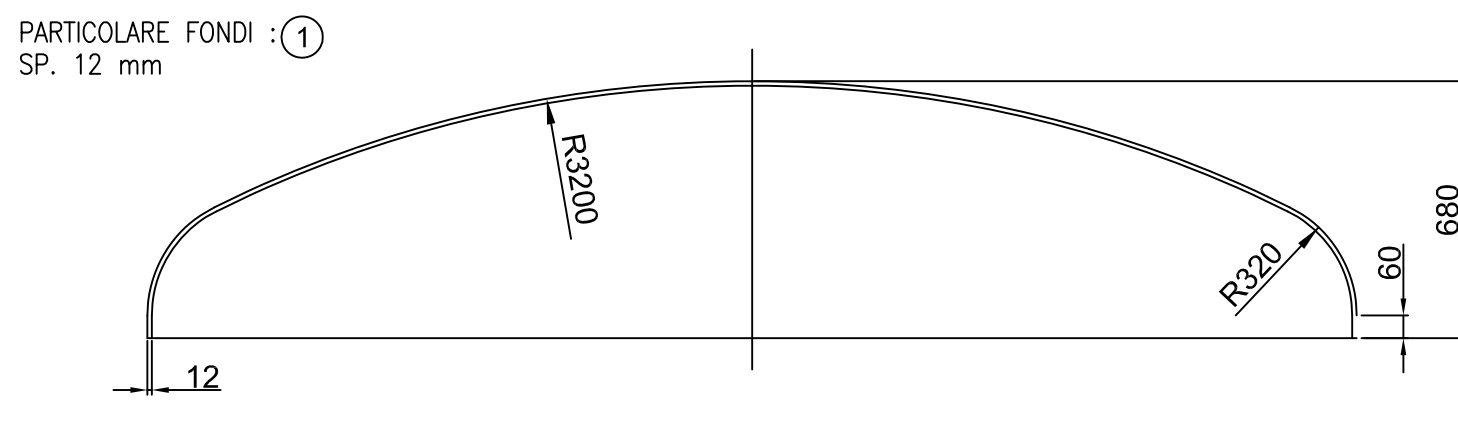
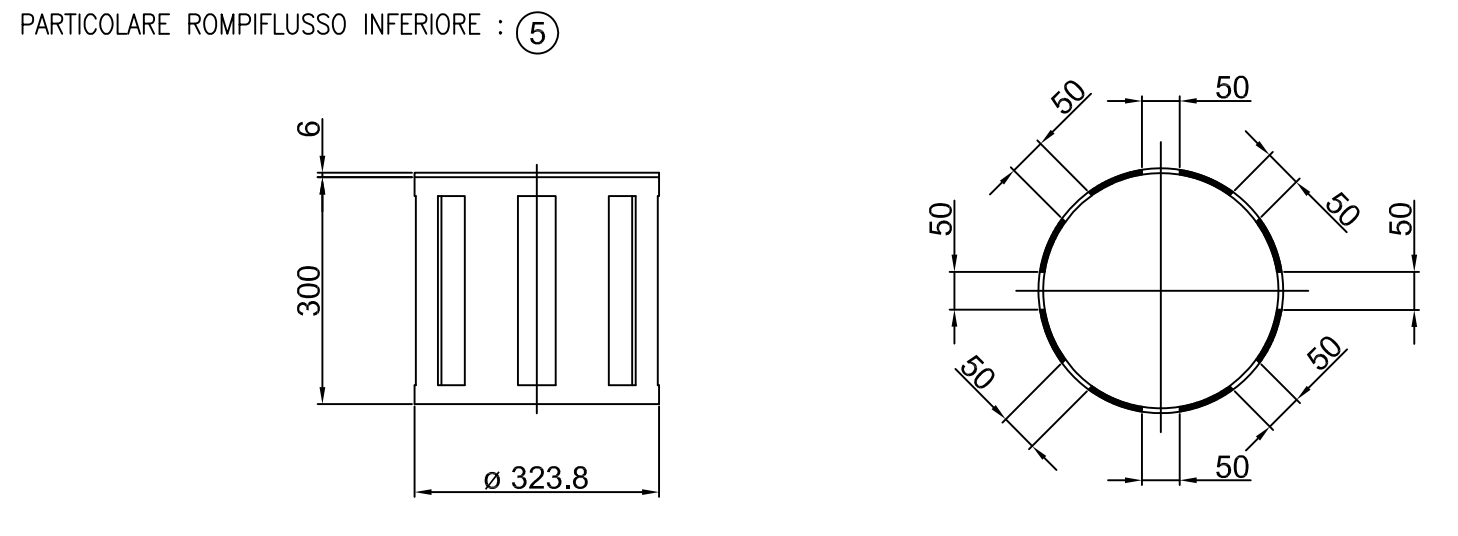
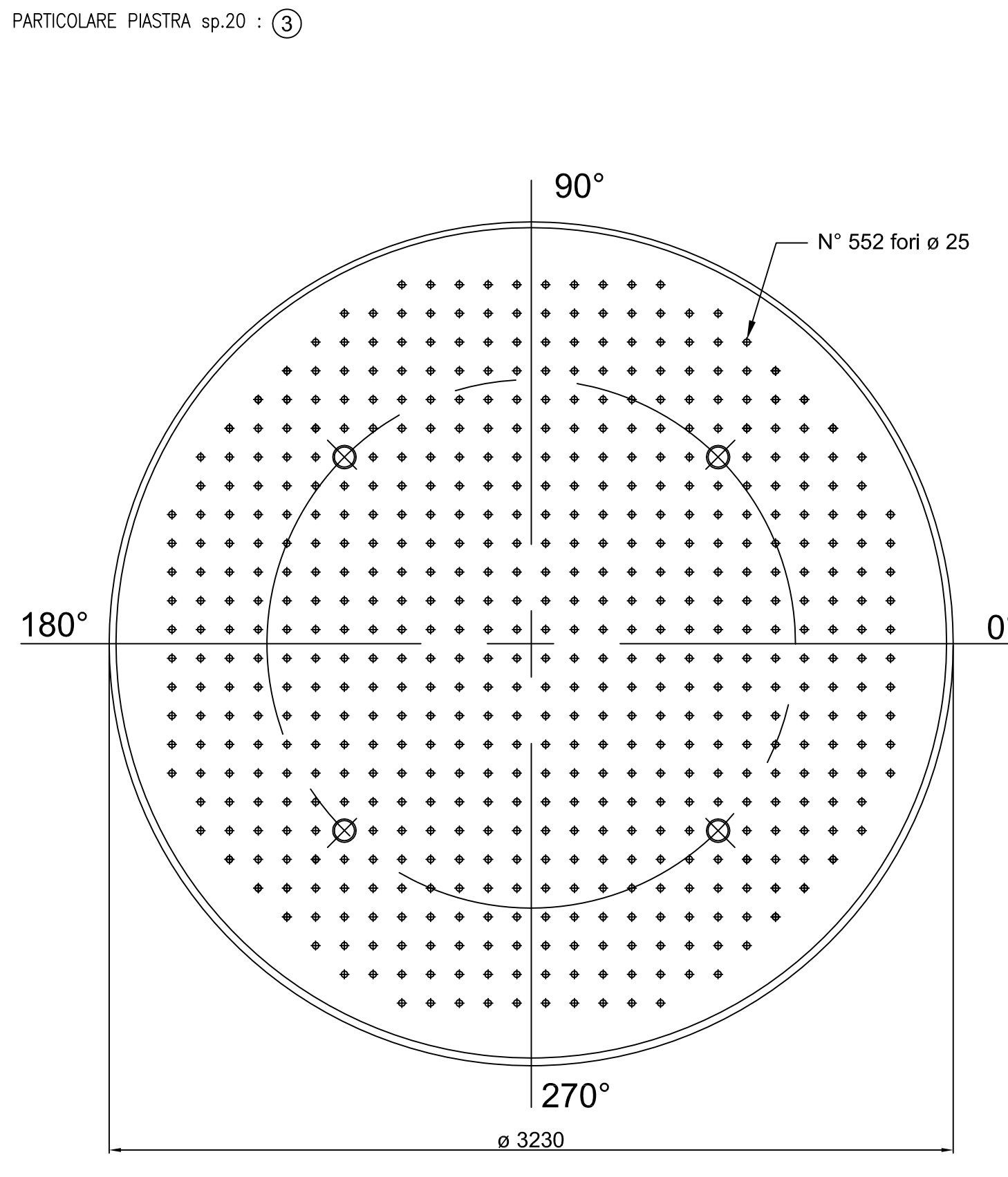
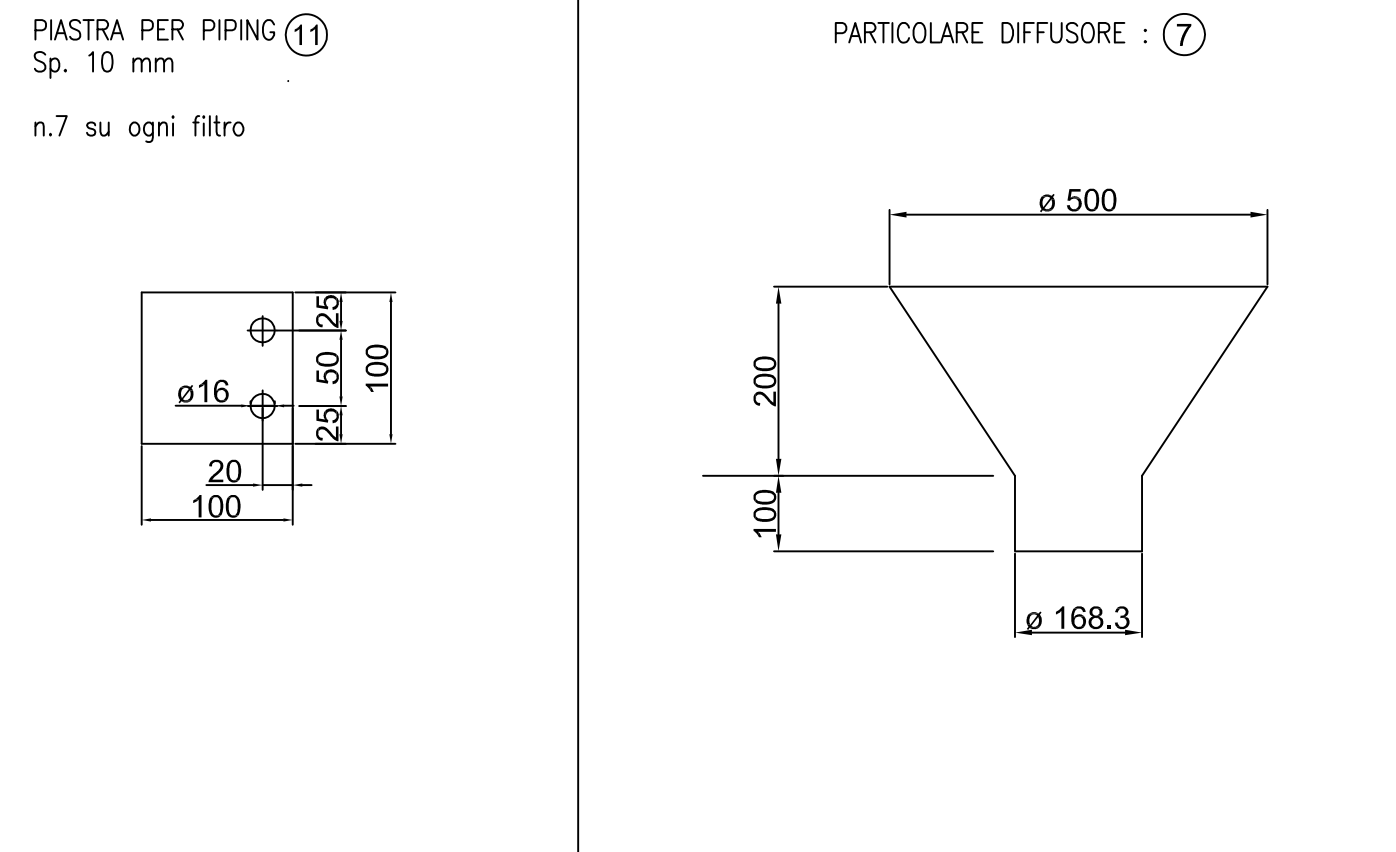
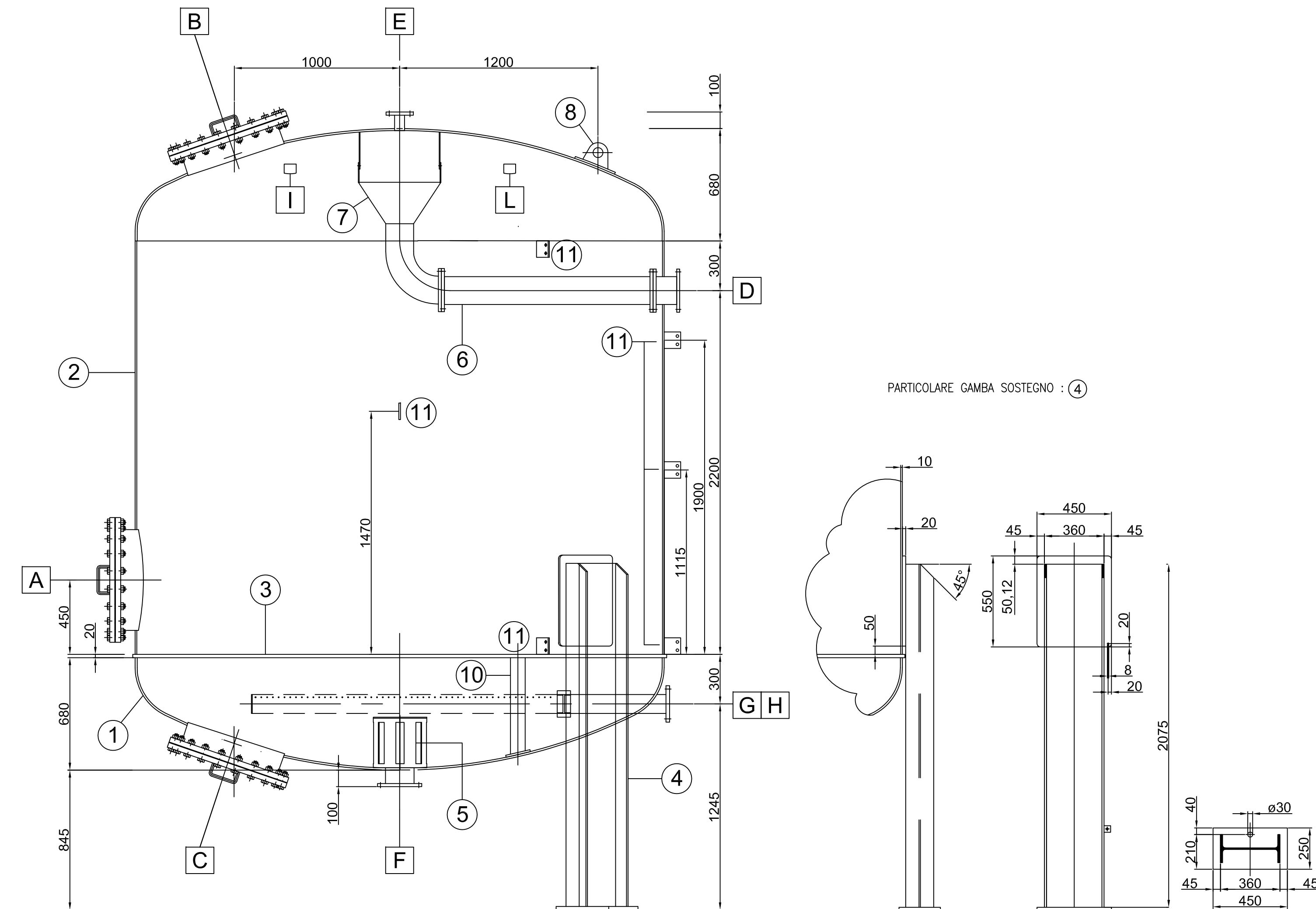
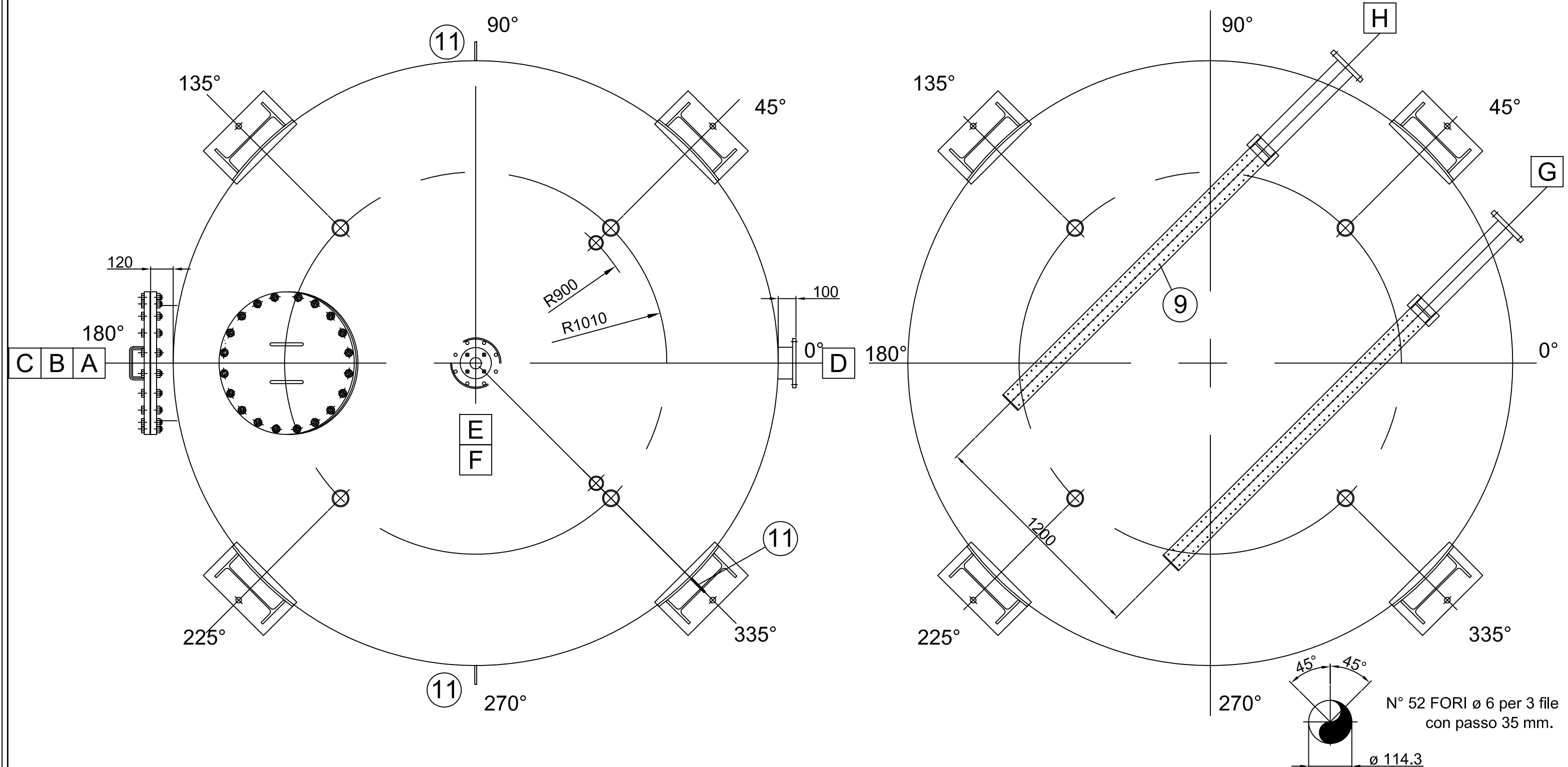


Table titled 'DISTINTA MATERIALI' listing materials for various components like Fondo, Virola, Piastra, Gamba, Rompiflusso, Tubo, Cono, Sollevamento, and Piastra.

Table titled 'PRELIEVO CAMPIONE' listing sampling points (M, L, I, H, G, F, E, D, C, B, A) and their corresponding materials and services.



Welding specifications section (SALDATURA) detailing requirements for various joints: Fondi, Virole, Bocchelli, Bocchelli Passanti, and Rinforzi e Pads.